

## Product Description

Material	eva
Model	021
Upper	3D fly knitted fabric EVA
Toe Cap	1. Steel toe cap or composite toe cap 200 Joules 2. metatomeal
Midsole	1. 1100 2. metatomeal
Outsole	3D fly knitted
Upper	3D fly knitted
Upper	metatomeal EVA
Upper	
Upper	
Upper	36-47
Upper	CE EN ISO 20345:2011 SB-P SRC
Upper	6
Upper	1 pair per color 10 58.5 X 40 X 32.5 CM
Upper	3300 /1x20" 6600 /1x40"

## Product Pictures



200 JOULE  
TOECAP



SLIP-  
RESISTANT



SHOCK  
ABSORPTION



ANTI-STATIC



PETROL AND  
CHEMICAL  
RESISTANT



ANTI-NAIL  
MIDSOLE



OIL  
RESISTANT













## Company Information

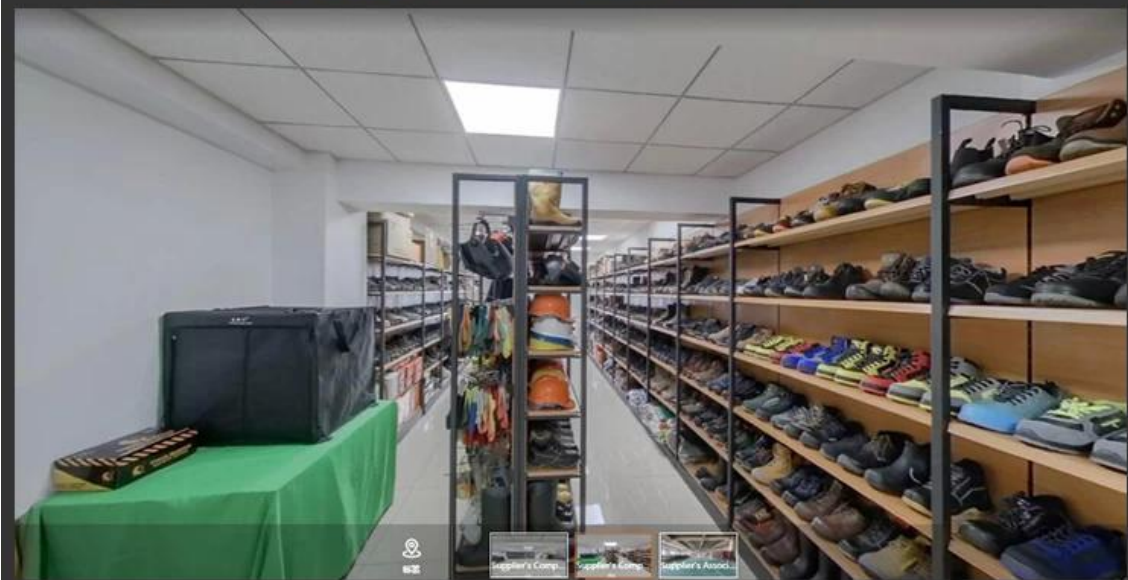
Our products are made of PVC and comply with ISO 9001:2015, CE, EN ISO 20345:2011, ASTM F2413-18, and PPE standards. We also offer products in various colors, sizes, and styles, such as Y and ETC.

Our products are made of PVC and comply with ISO 9001:2015, CE, EN ISO 20345:2011, ASTM F2413-18, and PPE standards. We also offer products in various colors, sizes, and styles, such as Y and ETC.





# TIGER MASTER SAMPLE ROOM



# SAFETY SHOES TEST



**Toecap Test  $\geq 200$  Joules**



**Midsole Test  $\geq 1200$  Newtons**



**ESD Anti-Static Test**



**Tear Strength  $\geq 120$ N**



**Bondness Test  
 $\geq 4.0$ N/mm**



**Flex Tester  $\geq 36,000$ T**

# Canton Fair



## SAFETY SHOES



## RAIN BOOTS



PROFESSIONAL SAFETY SHOE & RAIN BOOT FACTORY