

Product Description

品名	W1016
規格	ASTM F2413-05 M I / 75 C / 75 CE ENISO 20345 STANDARD
材質	PU
重量	1800g / 1x20'
尺寸	38-46 4-12
顏色	6
包裝	68 x 65 x 34.5
備註	1800g / 1x20' 3600g / 1x40'

Product Pictures







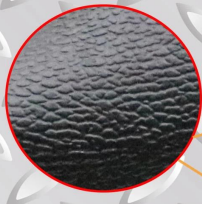


**Strong
Comfortable
Keep warm**



**Imported fur lining
Keep warm & comfortable**

**Embossed cow leather upper
Water proof, not easy to be broken**



**Embossed leather handle
Easy to wear welding boots**

**Padded velvet movable
Insole for soft & Shock
absorption**

**Natural rubber sole,
Anti slip & oil resistant,
Abrasion resistant,
Heel energy absorption**



**CE standard steel toe cap
Impact resistant 200 joules**



**CE standard steel Plate
Puncture resistant 1100 newtons**

