

Product Description

Model	TM220
Material	Upper: PU/PU Lining: PU/PU
Weight	1. 200g (per shoe) 2. 200g (per shoe)
Length	1. 1100mm (per shoe) 2. 1100mm (per shoe)
Width	36-46
Standards	CE EN ISO 20345 2011 SB-PSRC
Color	Black
Material	EVA
Material	PU
Material	PU
Weight	36-46
Standards	CE EN ISO 20345 2011 SB-PSRC
Color	Black
Material	1. 200g (per shoe) 2. 200g (per shoe)
Weight	59 x 44 x 33 CM
Material	3200mm/1x20" (per shoe) 6400mm/1x40" (per shoe)

Product Pictures



200 JOULE
TOECAP



SLIP-
RESISTANT



SHOCK
ABSORPTION



ANTI-STATIC



PETROL AND
CHEMICAL
RESISTANT



ANTI-NAIL
MIDSOLE

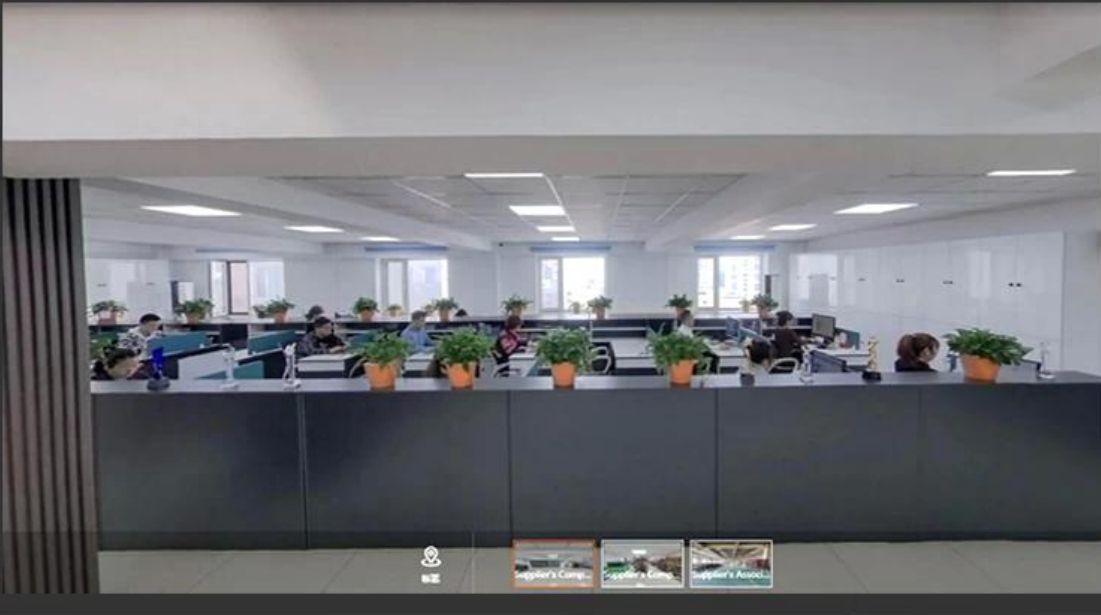
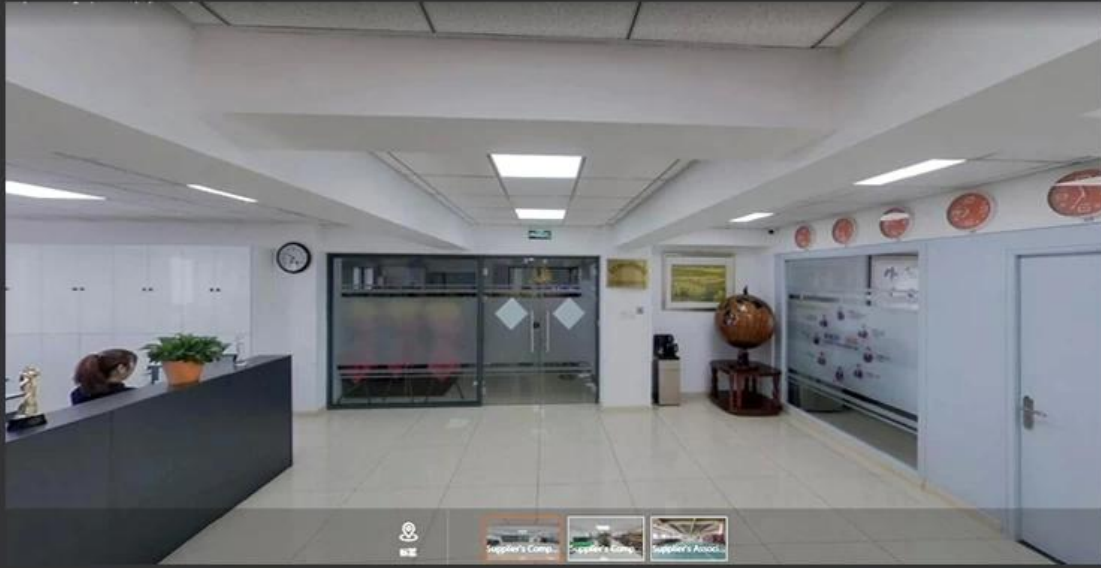


OIL
RESISTANT

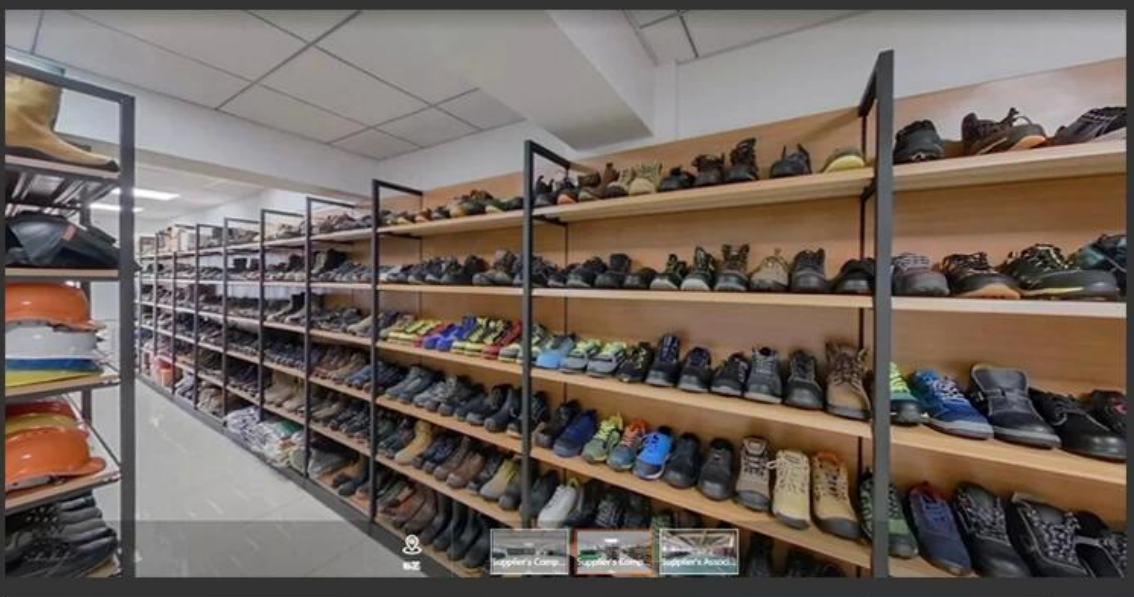




TIGER MASTER OFFICE SHOW



TIGER MASTER SAMPLE ROOM



SAFETY SHOES TEST



Toecap Test ≥ 200 Joules



Midsole Test ≥ 1200 Newtons



ESD Anti-Static Test



Tear Strength ≥ 120 N



**Bondness Test
 ≥ 4.0 N/mm**



Flex Tester $\geq 36,000$ T

Production Process



Raw Materials



Punching



Cutting



Riveting



Eyeletting



Sewing



Heat - Setting



Molding



Making up



Finished Goods



Packing



Inspection

Canton Fair



SAFETY SHOES



RAIN BOOTS



PROFESSIONAL SAFETY SHOE & RAIN BOOT FACTORY

PERSONAL PROTECTIVE EQUIPMENT WORK SAFETY SOLUTION PROVIDER



Safety Work Shoes

[View More](#)



PVC Rain Boots

[View More](#)



Military Army Boots

[View More](#)



Rain Coat/ Suit

[View More](#)



Work Garments

[View More](#)



Reflective Safety Vest

[View More](#)



Safety Work Gloves

[View More](#)



Safety Helmets

[View More](#)



Safety Harness

[View More](#)



Ear muff/ Plugs

[View More](#)



Safety Goggles

[View More](#)



Warning Tape

[View Details](#)