

## Product Description

Material	High-density polyethylene (HDPE)
Model	W1016
Weight	Approximately 1.2 kg per unit
Dimensions	<p>1. Overall length: 200 cm</p> <p>2. Width: 4 cm</p> <p>3. Thickness: 1.2 cm</p>
Standards	<p>1. Complies with ASTM F2413-05 M I / 75 C / 75 and CE ENISO 20345 standards.</p> <p>2. Meets safety requirements for slip resistance and impact protection.</p>
Material Composition	<p>1. Made from 100% recycled HDPE.</p> <p>2. Contains no harmful chemicals.</p>
Color	PU (Polyurethane) finish
Surface	Non-slip textured surface
Texture	Anti-static and anti-dust
Special Features	Includes EVA (Ethylene Vinyl Acetate) padding for comfort
Usage	Indoor and outdoor use
Length	28 cm
Width	38-46 (4-12)
Thickness	6 mm
Weight	Approximately 10 kg per unit
Dimensions	68 x 65 x 34.5 cm
Weight	<p>1800 kg / 1x20' container</p> <p>3600 kg / 1x40' container</p>

## Product Pictures









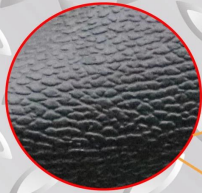


**Strong  
Comfortable  
Keep warm**



**Imported fur lining  
Keep warm & comfortable**

**Embossed cow leather upper  
Water proof, not easy to be broken**



**Embossed leather handle  
Easy to wear welding boots**

**Padded velvet movable  
Insole for soft & Shock  
absorption**

**Natural rubber sole,  
Anti slip & oil resistant,  
Abrasion resistant,  
Heel energy absorption**



**CE standard steel toe cap  
Impact resistant 200 joules**



**CE standard steel Plate  
Puncture resistant 1100 newtons**

