

Product Description

Model:	706
Material:	3D mesh fabric, 3D mesh fabric
Weight:	200 g/m ² . (ASTM F2413-18 M I / 75 C / 75, CE EN ISO 20345 S1P)
Strength:	1100 Newton. (ASTM F2413-18 M I / 75 C / 75, CE EN ISO 20345 S1P)
Standard:	CE EN ISO 20345 S1P SRC
Color:	Black
Size & Fit:	3d mesh fabric
Weight:	906g
Material:	EVA
Sockliner:	EVA
Color:	Black
Weight:	38-46.
Weight:	6. mm
Material:	Mesh / Mesh / Mesh fabric, Mesh fabric, Mesh, Mesh, Mesh fabric
Weight:	1 mm, 10 mm. Mesh fabric 58.5 x 40 x 32.5 cm.
Weight:	3300pairs / 1x20 'Mesh fabric 6600Pairs / 1x40 'Mesh fabric

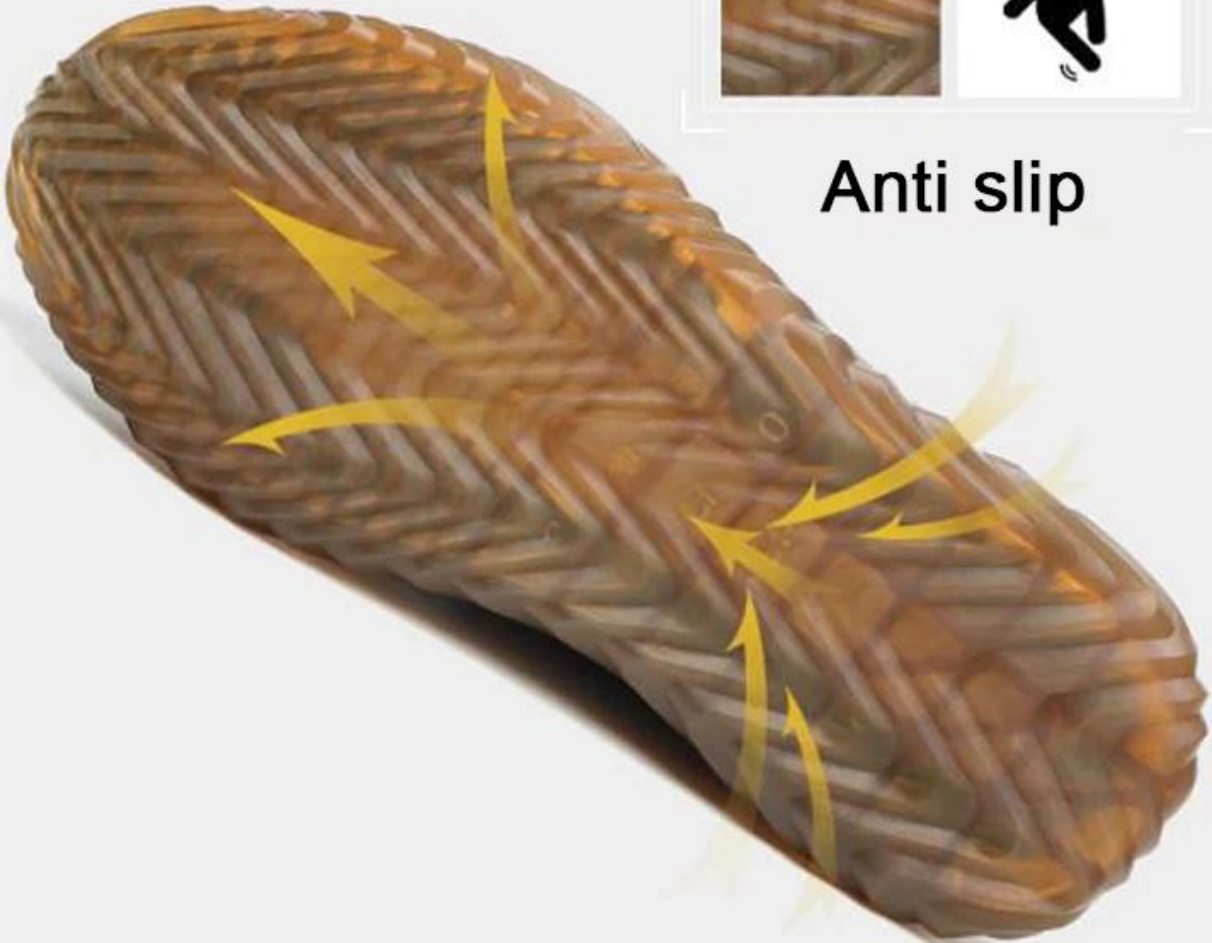
Product Pictures



Soft & Comfortable



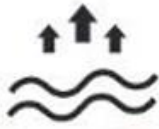
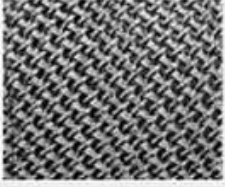
Anti slip



Light Weight



Breathable



SAFETY SHOES TEST



Toecap Test ≥ 200 Joules



Midsole Test ≥ 1200 Newtons



ESD Anti-Static Test



Tear Strength ≥ 120 N



**Bondness Test
 ≥ 4.0 N/mm**



Flex Tester $\geq 36,000$ T

Canton Fair



SAFETY SHOES



RAIN BOOTS



PROFESSIONAL SAFETY SHOE & RAIN BOOT FACTORY