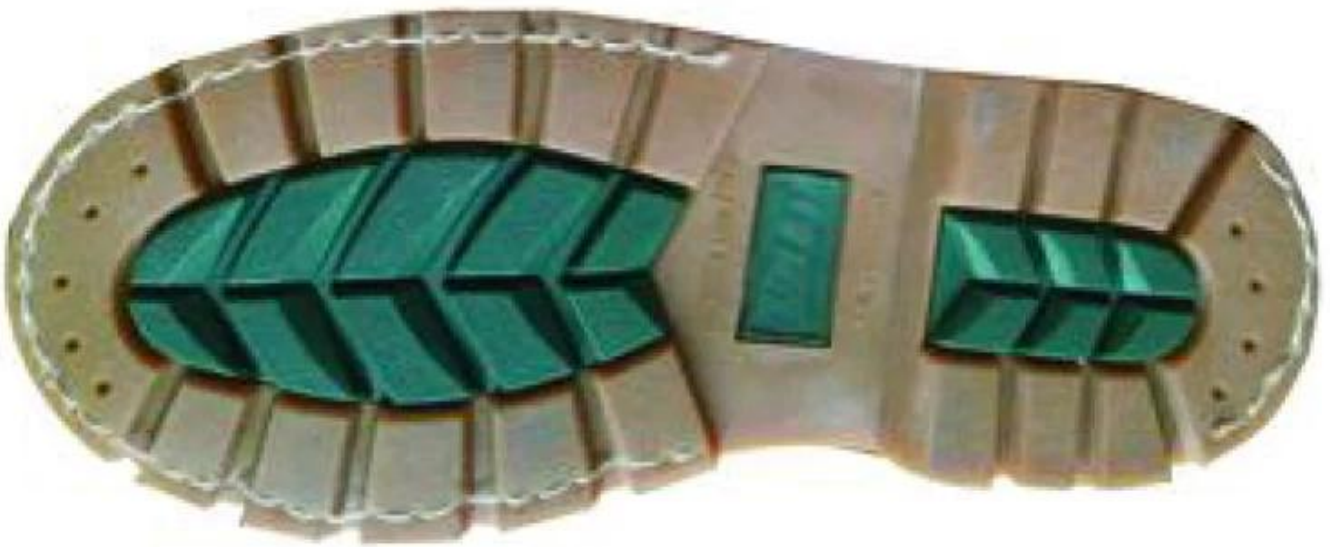


ᄁᄁᄁ:	ᄁᄁ ᄁ ᄁᄁ ᄁᄁ ᄁᄁᄁ ᄁᄁ ᄁᄁ goodyear ᄁᄁ ᄁᄁ
ᄁᄁ ᄁᄁ:	GY003
ᄁᄁᄁ ᄁ :	ᄁᄁ leahter (ᄁᄁᄁ Nubuck ᄁᄁ, ᄁᄁ ᄁ ᄁᄁᄁ ᄁᄁ, ᄁᄁ ᄁᄁ, ᄁᄁ ᄁ ᄁᄁᄁ ᄁᄁ, ᄁᄁᄁ ᄁᄁᄁᄁ ᄁᄁ, ᄁᄁᄁᄁ leataher ᄁᄁ ᄁᄁ ᄁᄁᄁ ᄁᄁᄁ ᄁ ᄁᄁᄁᄁ. ᄁ (Sole) : ᄁᄁᄁ ᄁᄁ ᄁᄁ, ᄁᄁᄁᄁ, ᄁᄁ ᄁ ᄁᄁᄁ ᄁᄁ (ᄁᄁᄁ ᄁᄁᄁ ᄁ, ᄁᄁᄁ ᄁᄁᄁ ᄁᄁᄁ ᄁᄁᄁ)
ᄁᄁᄁ:	1. ᄁᄁ ᄁᄁ ᄁᄁᄁ ᄁᄁᄁ ᄁᄁᄁᄁ. (ASTM F2413-05 M I / 75 C / 75, CE ENISO 20345 ᄁᄁ, ᄁᄁᄁ ᄁᄁ ᄁᄁ ᄁᄁ ᄁᄁᄁ)
	2. ᄁ - ᄁᄁ ᄁᄁᄁ ᄁᄁᄁᄁᄁ.
ᄁᄁ : (ᄁᄁ ᄁᄁ ᄁᄁ)	1. ᄁᄁ ᄁᄁᄁᄁᄁ ᄁᄁ ᄁᄁᄁᄁ ᄁᄁᄁᄁᄁᄁ. (ASTM F2413-05 M I / 75 C / 75, CE ENISO 20345 ᄁᄁ, ᄁᄁᄁ ᄁᄁᄁ ᄁᄁᄁ ᄁᄁ)
	2. ᄁ ᄁᄁᄁ ᄁᄁᄁᄁᄁ.
ᄁᄁ:	PU ᄁᄁᄁ ᄁᄁ ᄁᄁᄁᄁ ᄁᄁ.
ᄁ:	ᄁᄁᄁ ᄁᄁᄁᄁ ᄁᄁᄁᄁ ᄁᄁ
ᄁ:	ᄁ - ᄁ CAMBRELLA (ᄁᄁ ᄁᄁᄁ ᄁ ᄁᄁ ᄁᄁ ᄁ ᄁ ᄁᄁᄁᄁ)
Sockliner :	ᄁᄁᄁ ᄁᄁ
ᄁᄁ:	Goodyear welted
ᄁᄁ:	6 ᄁᄁ
ᄁᄁ:	4-13 (38-47)
ᄁᄁ:	6 ᄁᄁ, ᄁᄁᄁ ᄁᄁ.
ᄁᄁᄁ:	ᄁᄁ ᄁᄁ ᄁᄁ ᄁᄁ, ᄁᄁ 10 ᄁ
ᄁᄁ ᄁᄁ	65x48x36cm
ᄁᄁᄁᄁᄁ ᄁᄁ ᄁᄁ :	2600 ᄁ / 1x20 'ᄁᄁᄁᄁ 5200 ᄁ / 1x40 'ᄁᄁᄁᄁ





□ □□ □□ □□ □□ :

- 1) OEM □□ : □□□□ □□ □□ □□□□ □□ □□
- 2) □□ □ □□ □□, □□□□ □□ □□ outsole, □□□□ □□
- 3) □□ □□□, □□ □□□□ □□, □ □□□□ □□ □□□□□.
- 4) □□ : 6 □□, □□□□ □□□□ □□.
- 5) □□□□ □□□□ □□□, □□ □□ □□ □□
- 6) □□, □□, □□, □□ □ □□□□ requirement□ □ □ □□ □□□□.