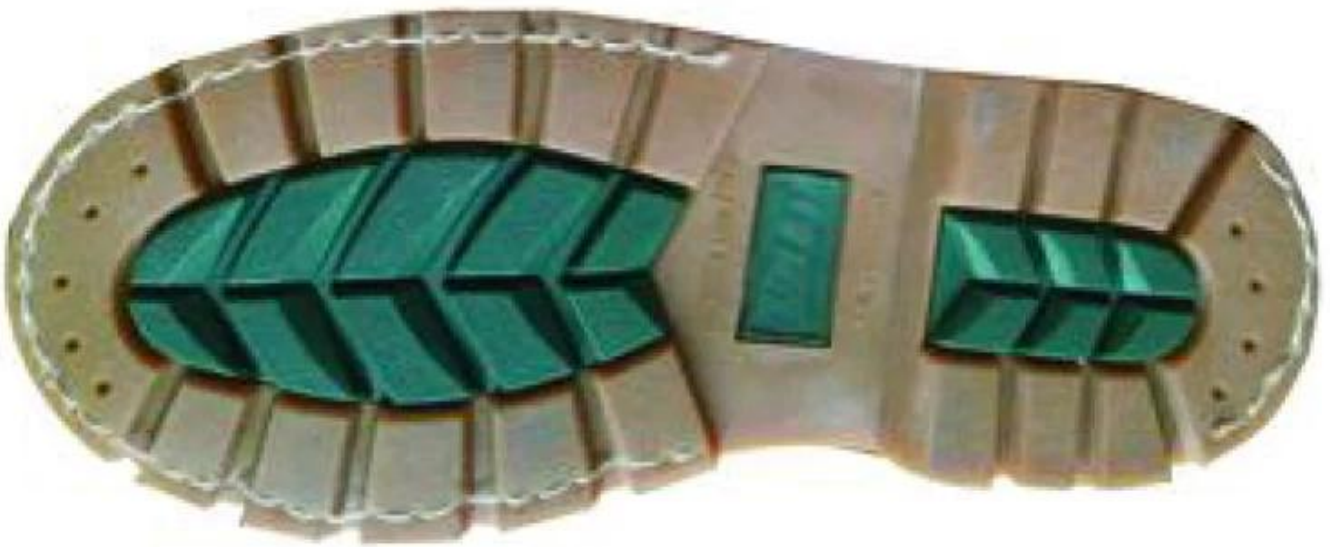


Material:	Black Nubuck leather
Model:	GY006
Material details:	Nubuck leather (Nubuck leather, leather, leather, leather, leather) Sole: Rubber sole, leather sole (Nubuck leather, leather sole)
Standards:	1. ASTM F2413-05 M I / 75 C / 75, CE ENISO 20345 (Safety shoe standards) 2. - Safety shoe standards.
Material details (Nubuck leather):	1. Nubuck leather shoe standards. (ASTM F2413-05 M I / 75 C / 75, CE ENISO 20345 (Safety shoe standards)) 2. - Safety shoe standards.
Material:	Leather sole.
Material:	Black
Material:	Black - CAMBRELLA (Safety shoe standards)
Sockliner:	Black
Material:	Goodyear welted
Material:	6 mm
Material:	4-13 (38-47)
Material:	6 mm, leather sole.
Material:	Black leather sole, 10 mm.
Material:	65x48x36cm
Material details:	2600 mm / 1x20 'Nubuck 5200 mm / 1x40 'Nubuck

Black leather shoe standards:





□ □□ □□ □□ □□ :

- 1) OEM □□ : □□□□ □□ □□ □□□□ □□ □□
- 2) □□ □ □□ □□, □□□□ □□ □□ outsole, □□□□ □□
- 3) □□ □□□, □□ □□□□ □□, □ □□□□ □□ □□□□□.
- 4) □□ : 6 □□, □□□□ □□□□ □□.
- 5) □□□□ □□□□ □□□, □□ □□ □□ □□
- 6) □□, □□, □□, □□ □ □□□□ requirement□ □ □ □□□□□.