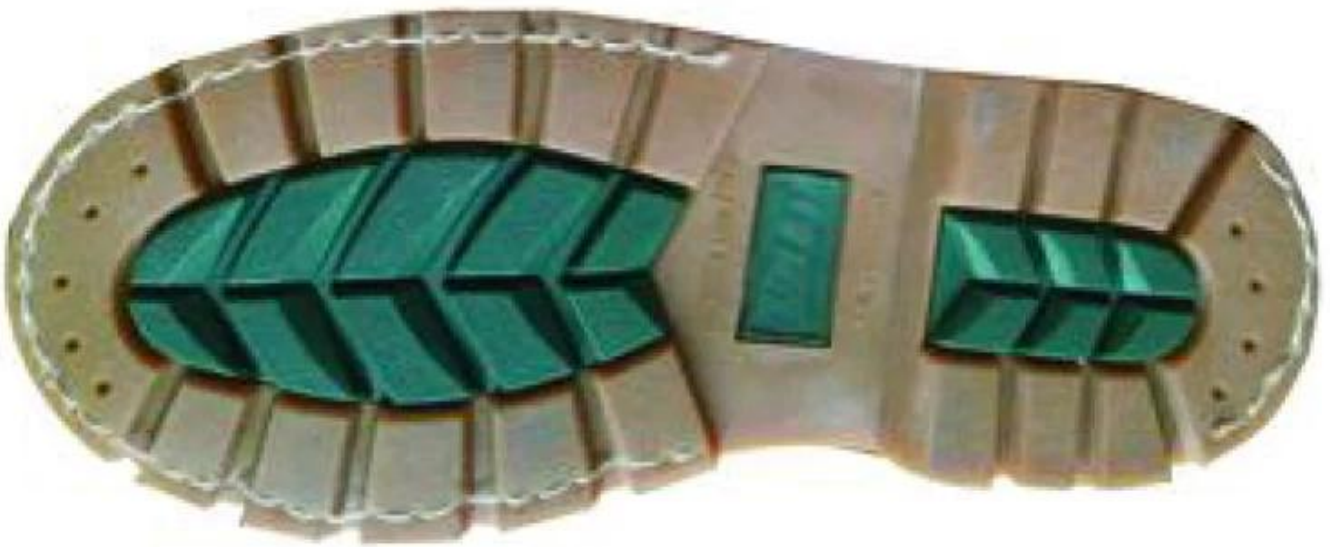


Product Name:	Heavy duty nubuck leather steel toe goodyear welted work boots shoes
Item No:	GY001
Upper and Sole:	Nubuck leather (A variety of leather to choose from, such as crazy horse leather, oil full grain leather, pull-up leather, waxy full grain leather, grain tumble leather, suede leather etc.). Sole: Perfect rubber material, abrasion resistant, oil and slip resistant(thick and heavy duty layer, A variety of styles to choose from)
Toe:	1. Steel toe cap to be impact resistant . (ASTM F2413-05 M I/75 C/75, CE ENISO 20345 STANDARD, A variety of fitting to choose from)
	2. non-steel toe is also provided.
Steel plate : (steel midsole)	1. Steel plate to be puncture resistant. (ASTM F2413-05 M I/75 C/75, CE ENISO 20345 STANDARD, A variety of fitting to choose from)
	2. non-steel plate is also provided
Collar:	PU padded with heavy duty sponge.
Tongue:	perfect soft suede leather
Lining:	NON-WOVEN CAMBRELLA (MESH FABRIC, AND LEATHER CAN BE PROVIDED)
Sockliner:	Comfortable cushion
Construction:	Goodyear welted
Height:	6 inch
Size:	4—13 (38-47)
Guarantee:	6 month, heavy duty and solid quality.
Package:	Color inner box packing, 10 pairs in a carton
Carton Size	65x48x36cm
Load quantity of Container:	2600pairs /1x20' container 5200pairs /1x40' container

Goodyear work boots show:





Goodyear work shoes features:

- 1)OEM business: be customized as pictures or draft or samples
- 2)Good year welted construction, heavy duty rubber outsole, traditional technology
- 3)with steel toe only,with steel toe and steel plate,non-safety are all provided.
- 4)Guarantee: 6 month, heavy duty and solid quality.
- 5)cute and fashionable design, quick production lead time
- 6)material, color, size, logo and style are various for requirment.